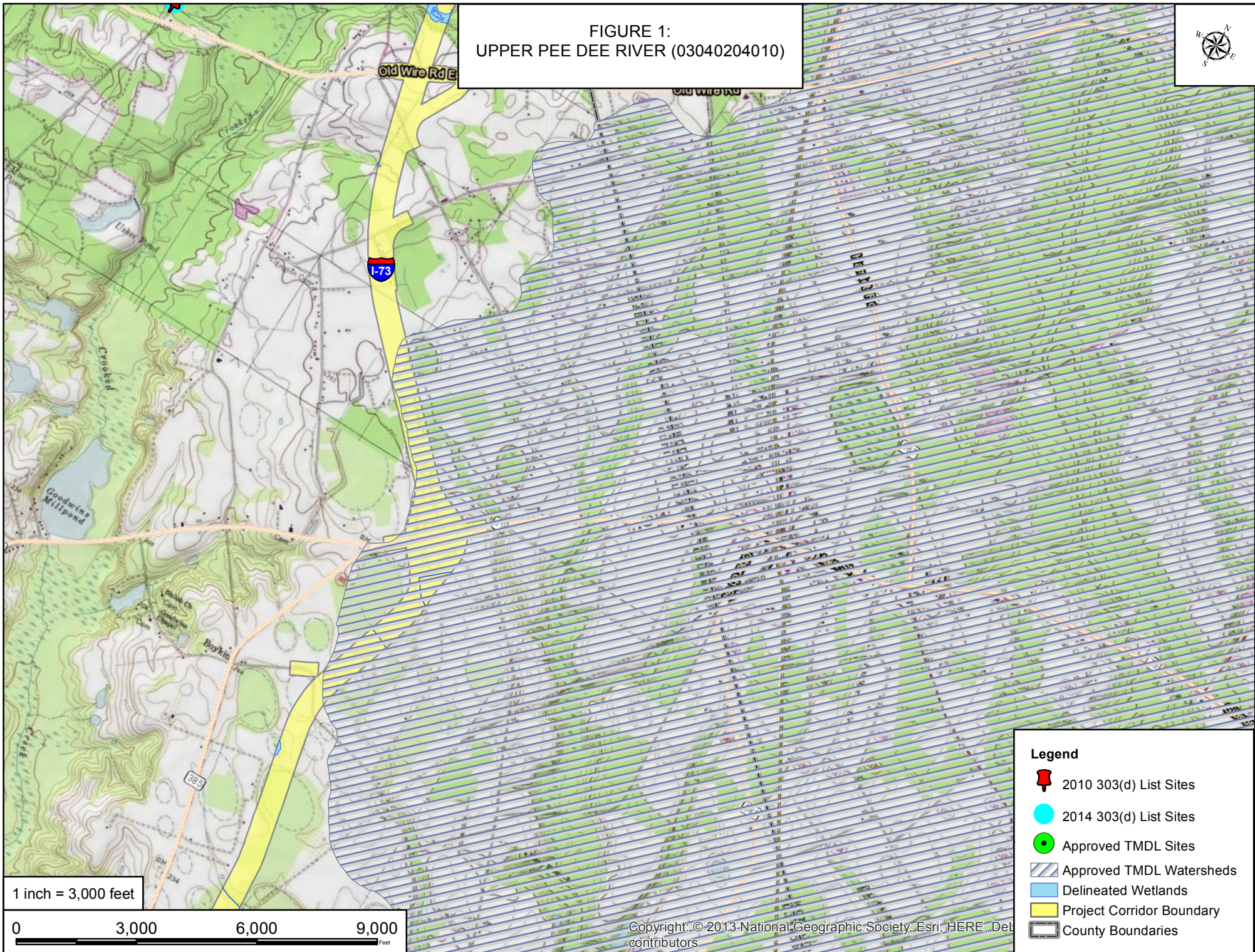
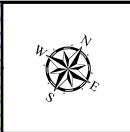


Appendix K

USGS Figures – Water Quality

FIGURE 1:
UPPER PEE DEE RIVER (03040204010)



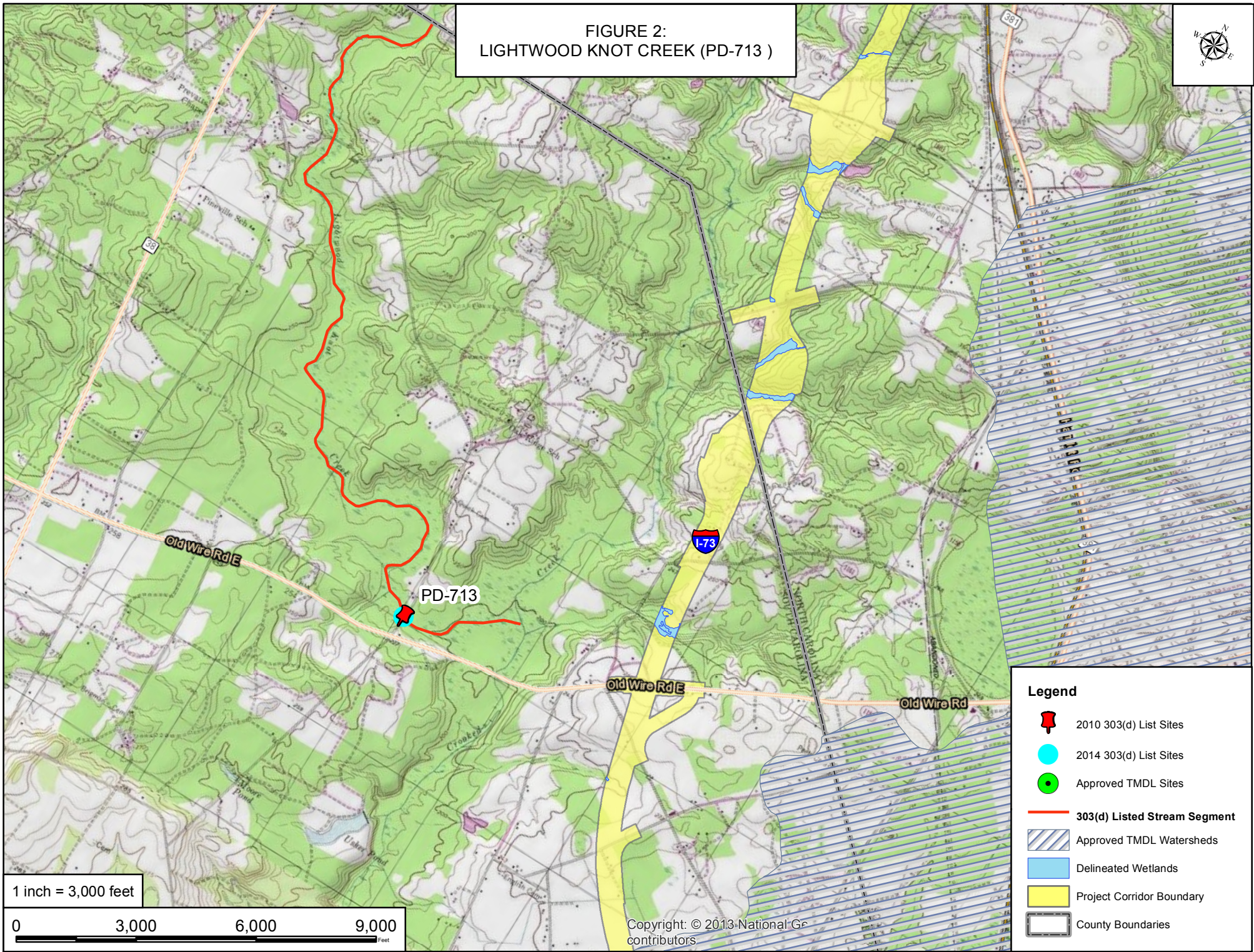
1 inch = 3,000 feet

0 3,000 6,000 9,000
Feet

Copyright: © 2013 National Geographic Society, Esri, HERE, DeLorme, contributors

- Legend**
- 2010 303(d) List Sites
 - 2014 303(d) List Sites
 - Approved TMDL Sites
 - Approved TMDL Watersheds
 - Delineated Wetlands
 - Project Corridor Boundary
 - County Boundaries

FIGURE 2:
LIGHTWOOD KNOT CREEK (PD-713)



1 inch = 3,000 feet



Copyright: © 2013 National Geographic contributors


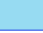

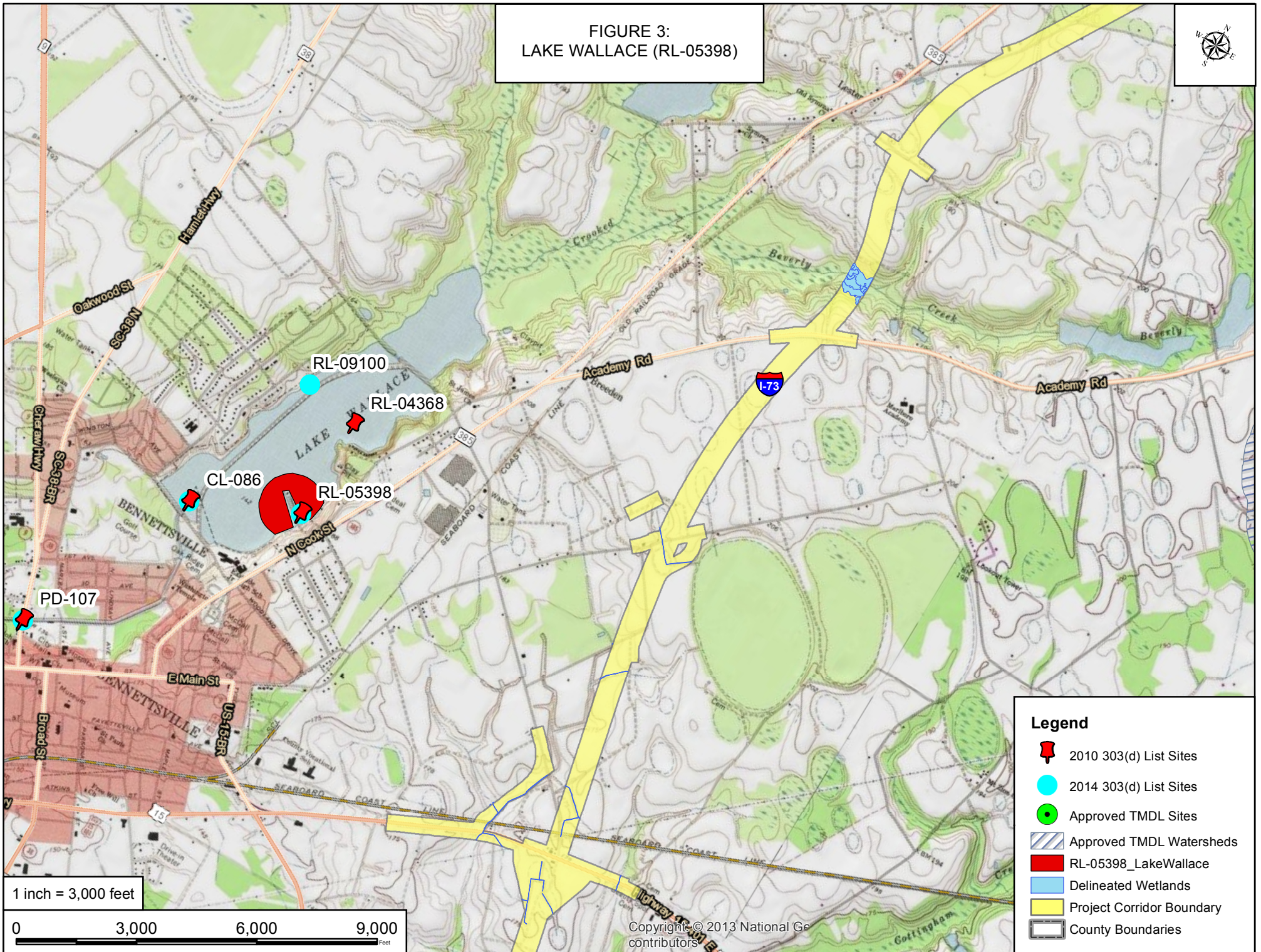
- Legend**
-  2010 303(d) List Sites
 -  2014 303(d) List Sites
 -  Approved TMDL Sites
 -  303(d) Listed Stream Segment
 -  Approved TMDL Watersheds
 -  Delineated Wetlands
 -  Project Corridor Boundary
 -  County Boundaries

FIGURE 3:
LAKE WALLACE (RL-05398)



1 inch = 3,000 feet



Copyright © 2013 National Geographic contributors

Legend

- 2010 303(d) List Sites
- 2014 303(d) List Sites
- Approved TMDL Sites
- Approved TMDL Watersheds
- RL-05398_LakeWallace
- Delineated Wetlands
- Project Corridor Boundary
- County Boundaries

Legend





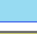


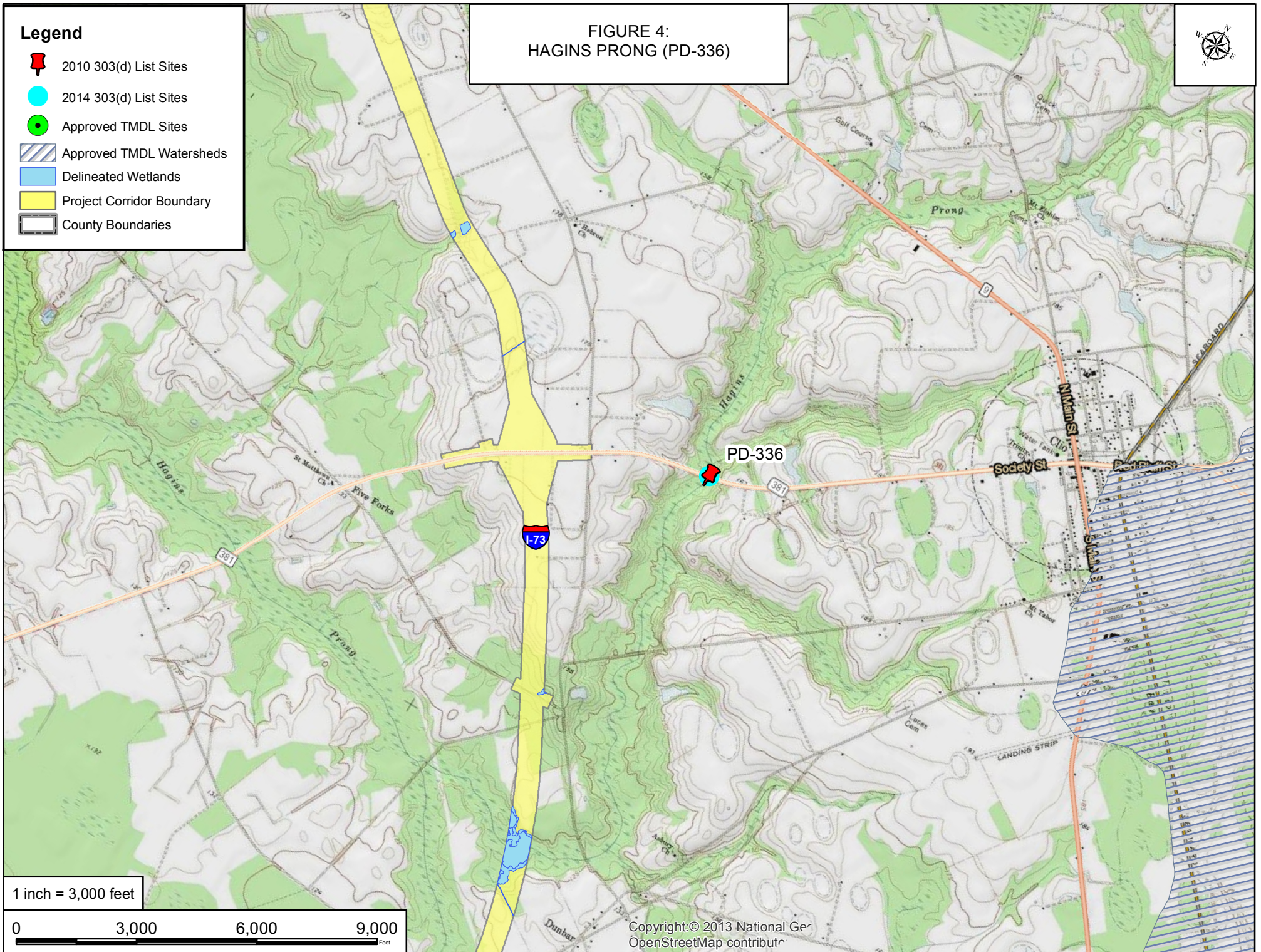
-  2010 303(d) List Sites
-  2014 303(d) List Sites
-  Approved TMDL Sites
-  Approved TMDL Watersheds
-  Delineated Wetlands
-  Project Corridor Boundary
-  County Boundaries

FIGURE 4:
HAGINS PRONG (PD-336)



1 inch = 3,000 feet

0 3,000 6,000 9,000
Feet

Copyright © 2013 National Geographic
OpenStreetMap contributors